

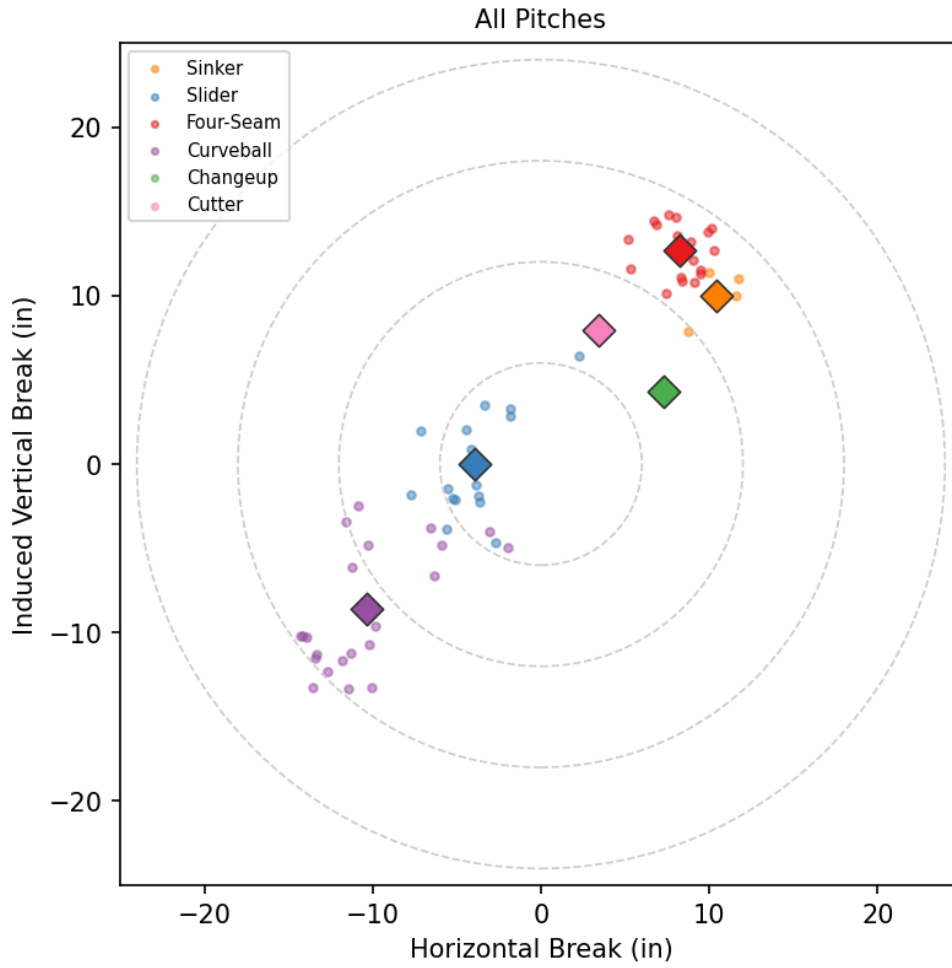
Miller Hogan

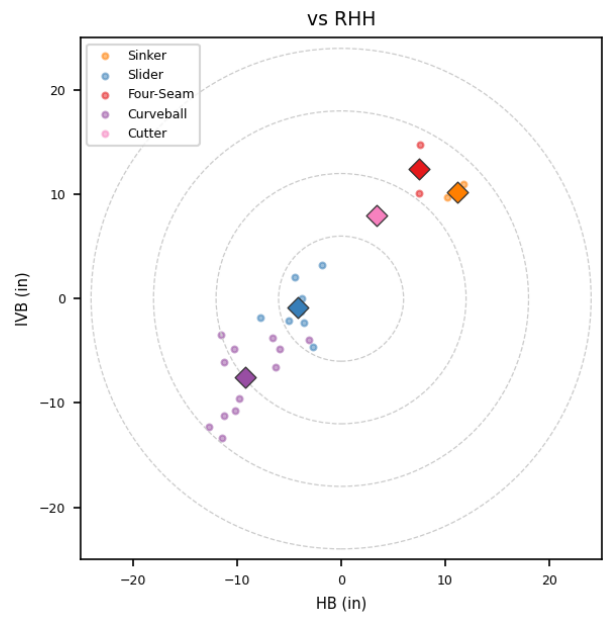
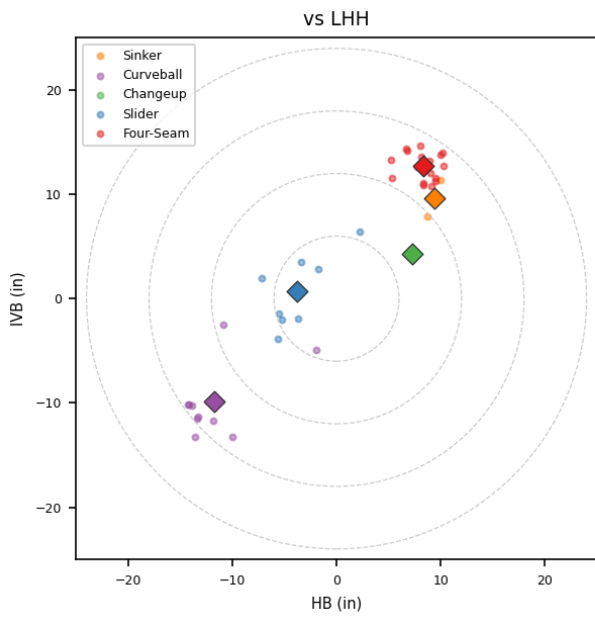
PIR_MEX | Right | 2026-04-16 to 2026-04-22

Pitching Profile

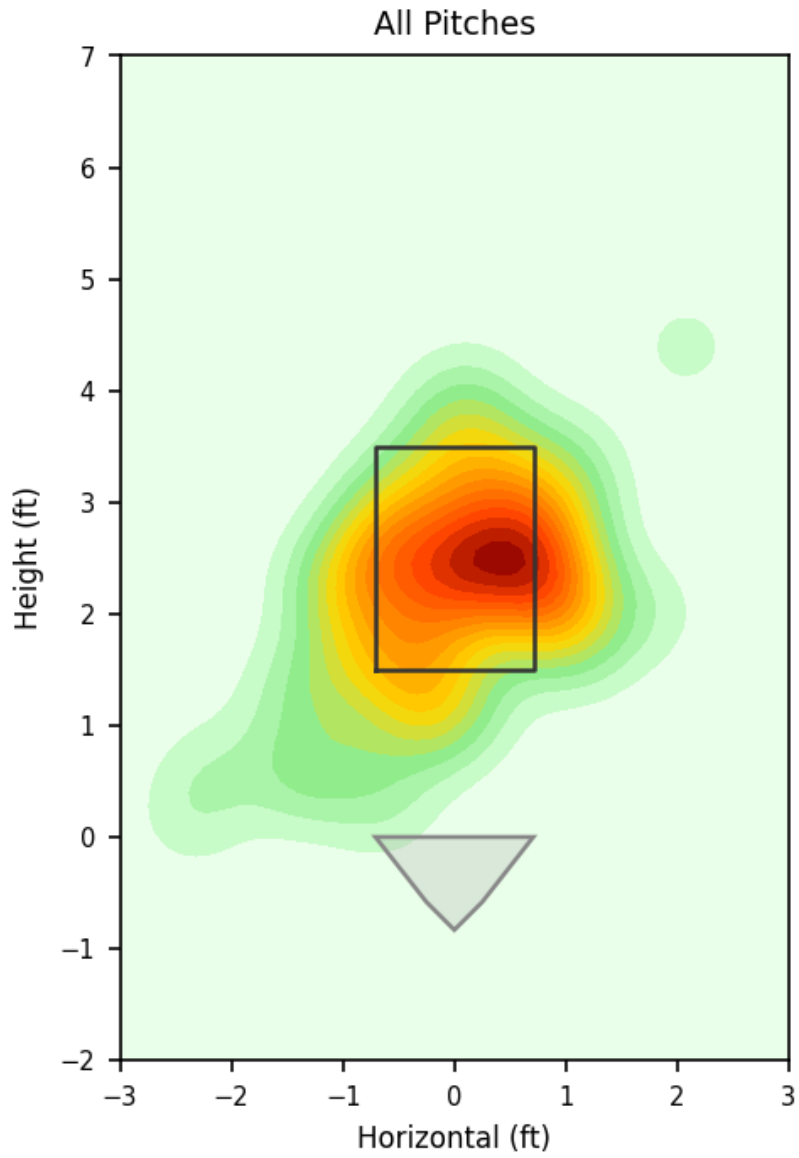
Pitch Type	Count	%	Avg Velo	Max Velo	Avg Spin	IVB	HB	Ext	Whiff%
Curveball	22	33.8%	73.9	77.5	2262.0	-8.6	-10.3	5.2	16.7%
Four-Seam	19	29.2%	91.1	92.9	2328.0	12.7	8.2	5.7	28.6%
Slider	17	26.2%	83.0	89.0	2326.0	-0.0	-4.0	5.3	71.4%
Sinker	5	7.7%	90.8	92.1	2307.0	10.0	10.4	5.8	-
Changeup	1	1.5%	81.9	81.9	1266.0	4.3	7.3	5.6	-
Cutter	1	1.5%	89.7	89.7	2236.0	8.0	3.4	5.9	-

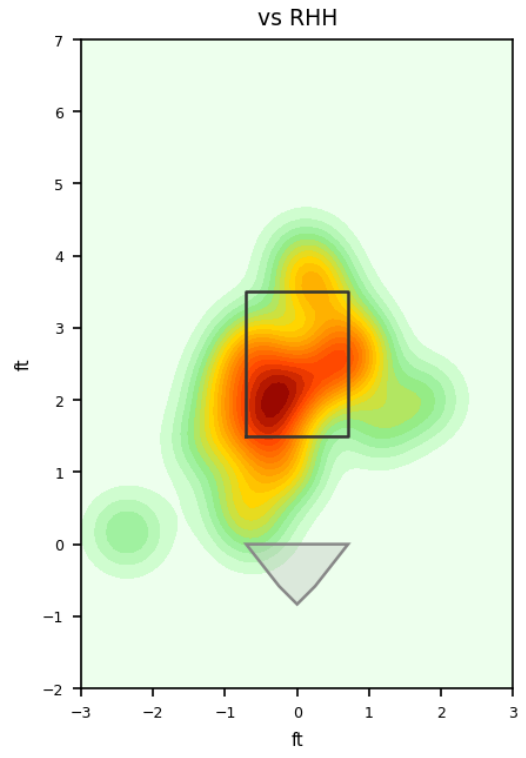
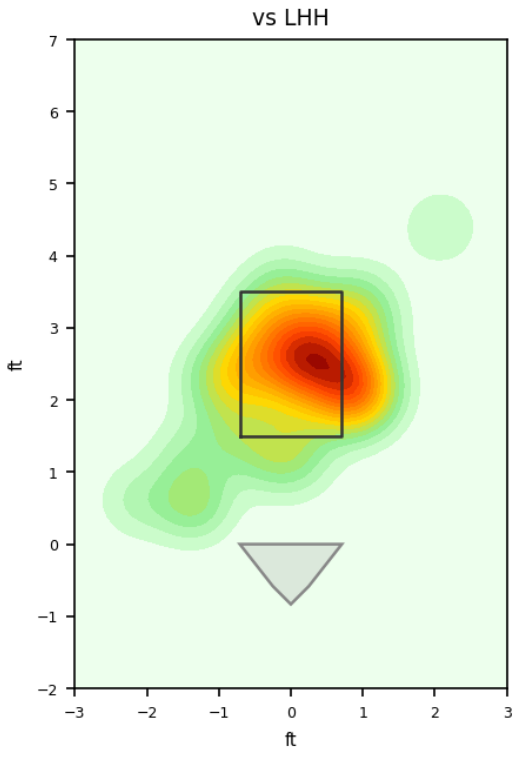
Movement Profile



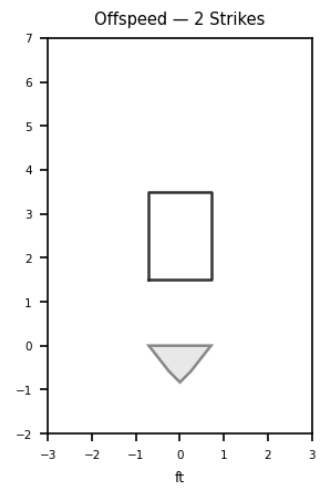
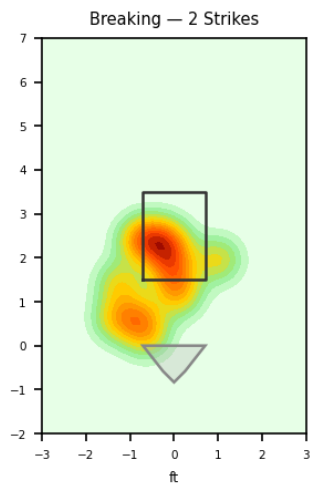
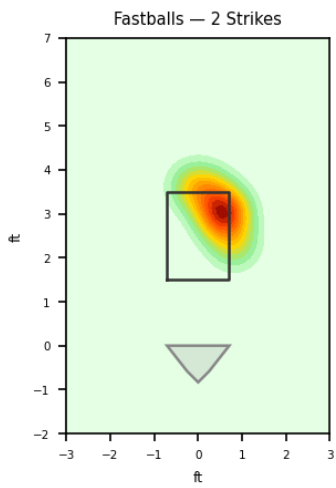
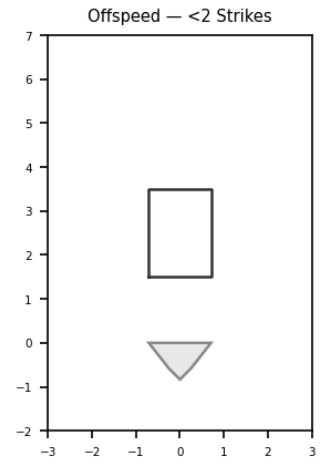
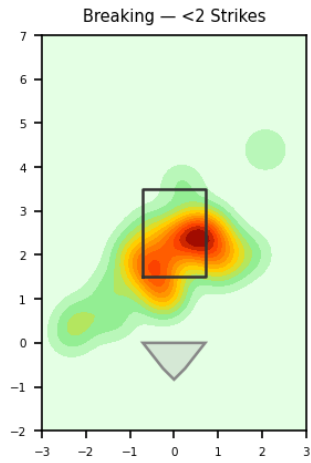
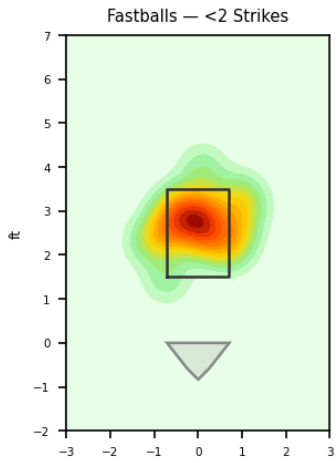


Location Density

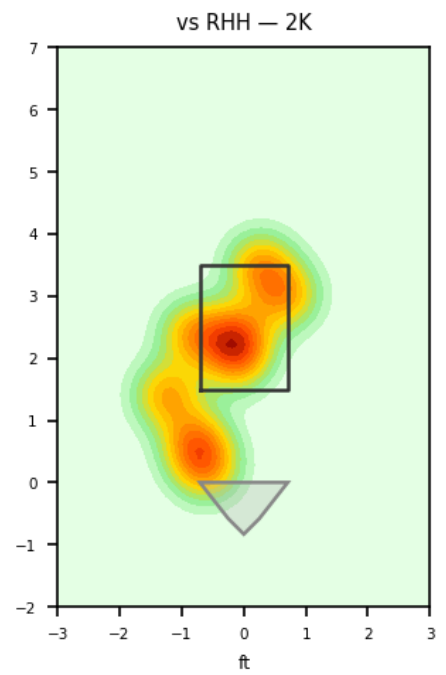
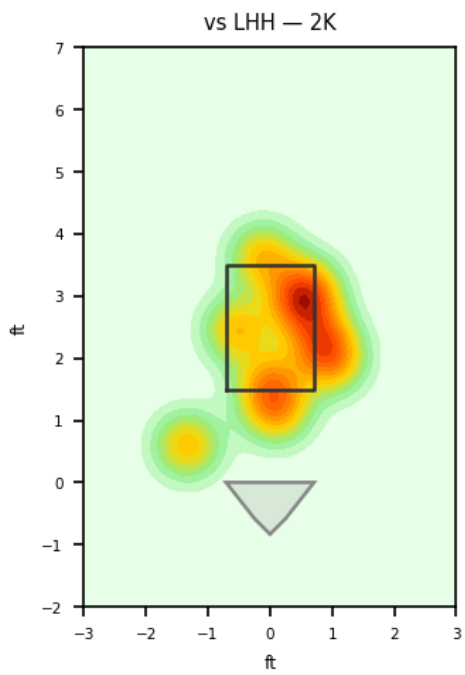
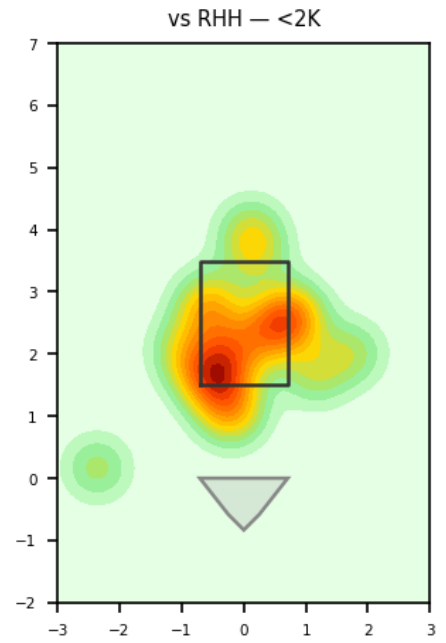
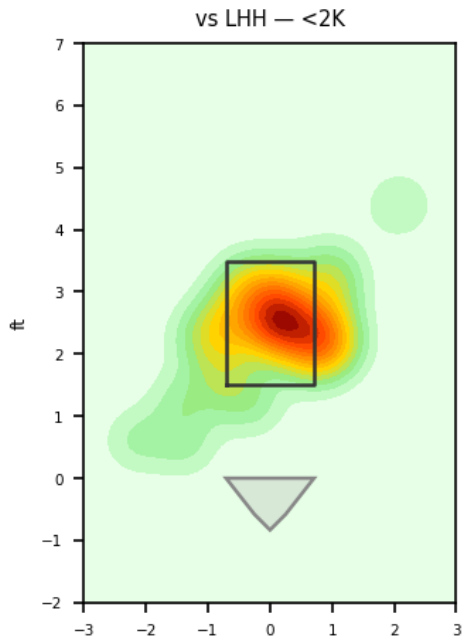




Location by Pitch Type & Count



Location by Handedness & Count



Splits vs LHH

Pitch	Count	%	Velo	Spin	IVB	HB	Whiff%
Four-Seam	17	43.6%	91.1	2332.0	12.7	8.3	28.6%
Curveball	10	25.6%	72.9	2305.0	-9.9	-11.7	-
Slider	9	23.1%	83.6	2308.0	0.7	-3.8	33.3%
Sinker	2	5.1%	91.1	2243.0	9.6	9.3	-
Changeup	1	2.6%	81.9	1266.0	4.3	7.3	-

Splits vs RHH

Pitch	Count	%	Velo	Spin	IVB	HB	Whiff%
Curveball	12	46.2%	74.8	2227.0	-7.6	-9.2	33.3%
Slider	8	30.8%	82.3	2347.0	-0.9	-4.1	100.0%
Sinker	3	11.5%	90.7	2351.0	10.2	11.2	-
Four-Seam	2	7.7%	90.8	2295.0	12.4	7.5	-
Cutter	1	3.8%	89.7	2236.0	8.0	3.4	-

Advanced Pitching (TrackMan)

Stat	Value	Stat	Value
Pitches	65	Games	1
Avg Velo	83.0 mph	Max Velo	92.9 mph
Avg Spin	2286.0 rpm	Extension	5.4 ft
IVB	1.7 in	HB	-1.2 in
Whiffs	8	BIP	24
Avg Exit Velo	82.7 mph	Dates	2026-04-16 to 2026-04-16

Pitch Mix

Pitch Type	Count	Avg Velo	Max Velo	Avg Spin	IVB	HB	Whiffs	BIP
Curveball	22	73.9	77.5	2262.0	-8.6	-10.3	1	7
Four-Seam	19	91.1	92.9	2328.0	12.7	8.2	2	8
Slider	17	83.0	89.0	2326.0	-0.0	-4.0	5	4
Sinker	5	90.8	92.1	2307.0	10.0	10.4	0	4
Changeup	1	81.9	81.9	1266.0	4.3	7.3	0	0
Cutter	1	89.7	89.7	2236.0	8.0	3.4	0	1

Traditional Pitching (API)

Stat	Value	Stat	Value
W-L	0-0	ERA	3.86
G/GS	1/1	SV/HD	0/0
IP	4.2	H/ER/HR	7/2/0
K/BB	3/0	K/BB Ratio	-
WHIP	1.5	K/9	5.8
BB/9	0.0	BF	19